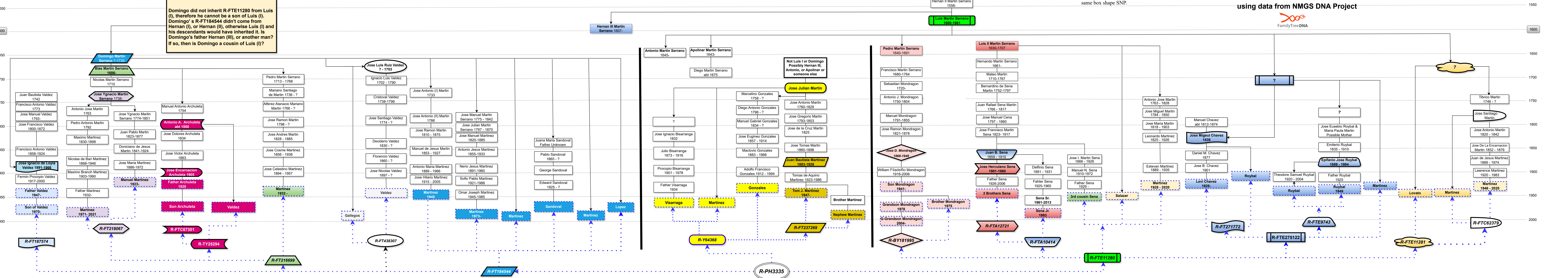


Progenitor of the Martinez Surname
for persons with ancestors in New Mexico
and may be the man born with SNP R-PH3335

Dotted arrows show which SNPs are owned
by the men in the dotted boxes. Box shapes
show who might be the man born with the
same box shape SNP.

Big Y-700 SNPs & Patrilineal Trees
by Tom J. Martinez
using data from NMGS DNA Project



Domingo did not inherit R-FTE11280 from Luis (I), therefore he cannot be a son of Luis (I). Domingo's R-FT184544 didn't come from Hernan (I), or Hernan (II), otherwise Luis (I) and his descendants would have inherited it. Is Domingo's father Hernan (III), or another man? If so, then is Domingo a cousin of Luis (I)?

R-PH3335

R-FTE11280

R-FTC62379

R-FTE275122

R-FTE9743

R-FTA10414

R-FY64368

R-FT237269

R-FT184544

R-FY438307

R-TY25294

R-FTC67301

R-FT218067

R-FT187574

R-FT216699

R-FT218067

R-FT218067

R-FT218067

R-FT218067

R-FT218067

1600

1650

1700

1750

1800

1850

1900

1950

2000

1600

1650

1700

1750

1800

1850

1900

1950

2000